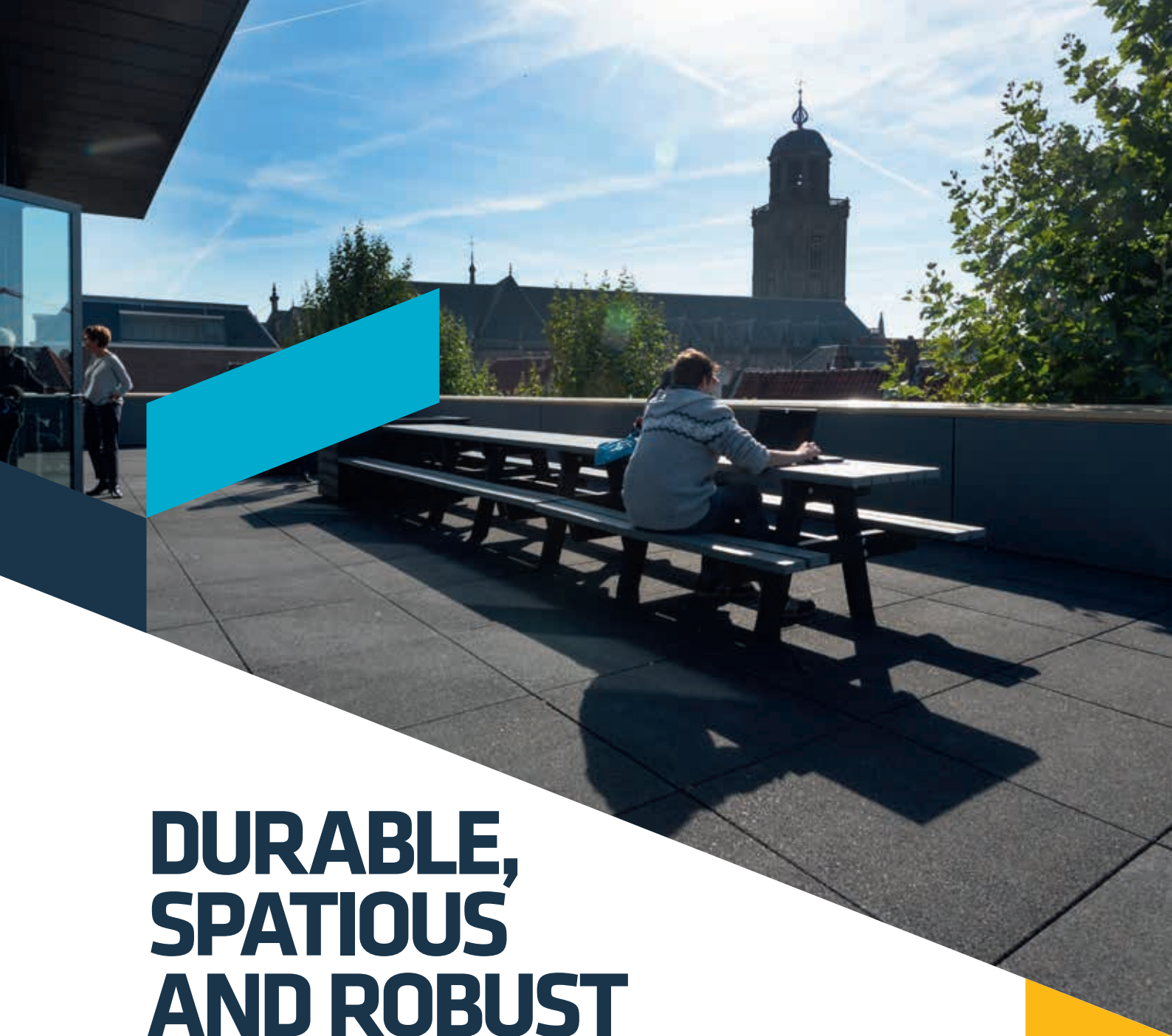




# DREEN<sup>®</sup>MAGNA

LARGE-FORMAT SLABS FOR  
ROOFTOP OUTDOOR SPACE

 **ZOONTJENS**  
A CRH COMPANY



# DURABLE, SPATIOUS AND ROBUST

**The use of large-format slabs on rooftop terraces creates large areas with few joints. Try combining different formats and colours to create a durable and trendy outdoor space.**

## **FOR ALL ROOFTOP TERRACES**

Dreen®Magna slabs are available in a variety of formats and thicknesses, making them ideal for numerous applications. On private rooftop terraces, use Dreen®Magna in the 60x60 cm or 80x40 cm format, with a thickness of 4.4 cm. For large public terraces and roofs subject to more intensive use, 60x60 cm or 100x100 cm format slabs with a thickness of 6 cm are more suitable.

## **DIFFERENT FINISHES**

The Dreen®Magna is available in two different finishes: comfort and texture. The comfort line is distinguished by its velvet-smooth surface, clean edge lines and robust character. In this perfectly smooth slab, the granulates are not visible. The finish of the texture line has a slightly rougher but nonetheless refined structure, revealing the natural stone granulates in the top layer in all their glory. The line is available in a variety of colours.

## SIMPLE MAINTENANCE

The slabs are finished with Hydro-M so they absorb less water and dry quickly. Hydro-M protects the slabs against efflorescence and fungal growth, and improves colourfastness. The result is a rooftop terrace that retains its attractive look for years, and is easy to maintain.

## SYSTEM FOR NORMAL LOAD APPLICATIONS

For laying rooftop terraces using Dreen®Magna in the 4.4 cm thickness, we use the fixplate lock system. This system locks and fixes the slabs in position, but the surface remains accessible (if necessary).

## SYSTEM FOR INTENSIVE USE

When laying rooftop terraces using Dreen®Magna in the 6 cm thickness, depending on the format, we work with one of two systems. The 60x60x6 format is laid using the fixplate system. For slabs larger than 60x60 cm, we always use DNS®Large. DNS®Large offers optimum pressure distribution for working with the large-format slabs on the roof. No matter what the format, all slabs can be laid to follow any inclination angle. The combination of slab and perfect support system guarantees stability and a durable rooftop terrace.

## PROPERTIES

- › *Dimensional stability*
- › *Colourfast*
- › *Wear resistant*
- › *Stable*
- › *Dry surface*
- › *Removable*
- › *Durable*



Dreen®Magna in the 4.4 cm thickness is fixed and enclosed solidly using the fixplate lock system



With Dreen®Magna 60x60x6, the fixplate guarantees stability and tight seams

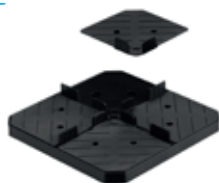


DNS®Large offers optimum pressure distribution across the roof for slabs larger than 60x60 cm



Dreen®Magna 100x100x6 can be laid on a slab carrier with crosspiece to follow any angled roof sections

### Sloping roof



Fixplate lock  
(for 60x60x4,4 of 80x40x4,4)



Fixplate  
(for 60x60x6)

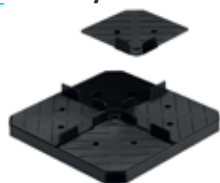


Fixplate base



Pressure distributor pad  
with spacer  
(for 100x100x6)

### Adjustable pedestal system



Fixplate lock  
(for 60x60x4,4 of 80x40x4,4)



Fixplate  
(for 60x60x6)



Height  
ring 24 mm



Height ring 48 mm

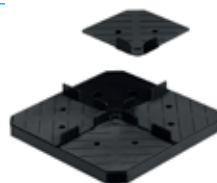


Adjustable base 35-55 mm



Adjustable base 50 - 74 mm

### DNS®



Fixplate lock  
(for 60x60x4,4 of 80x40x4,4)



Fixplate  
(for 60x60x6)



DNS® tube



DNS® foot

### DNS® Large (for 100x100x6)



¼ filler disc



Filler disc



Spacer

DNS® Large distribution disc



DNS® Large tube



DNS® Large foot

## TECHNICAL DATA FOR DREEN® MAGNA

|                                    |                  |                  |                |                  |
|------------------------------------|------------------|------------------|----------------|------------------|
| Dimensions                         | 60 x 60 x 4,4 cm | 80 x 40 x 4,4 cm | 60 x 60 x 6 cm | 100 x 100 x 6 cm |
| Weight per slab                    | 36,4 kg          | 32,3 kg          | 50,8 kg        | 135 kg           |
| Weight per m <sup>2</sup>          | 101,2 kg         | 101,1 kg         | 141,2 kg       | 135 kg           |
| Number of slabs per m <sup>2</sup> | 2,78             | 3,1              | 2,78           | 1                |
| Failure load                       | 7 kN             | 7 kN             | 13 kN          | 11 kN            |

These specifications, constructions and details were prepared according to the latest technological developments and with the greatest possible care. Zoontjens International B.V. accepts no liability whatsoever for any errors or inaccuracies or their consequences. In the interests of innovation and improvements, we reserve the right to make any necessary changes to the products and systems.

### WHAT IF THE WORLD WERE TWICE AS BIG.

It can be, as far as we're concerned. Our world, twice as big. A world that we are helping to design and construct perfectly with our roof slab systems. Our many years of experience have made us the number one expert in rooftop paving. For sustainable roofs, livable roofs for socialising. We interact with architects and contractors every day. With roofers and project developers. Creators and constructors. We listen to them, work with them and advise them. That's why we're the number one party with the best rooftop vision. It's our higher ground.